

Tricefy Adaptive Reporting Configuration on a GE Voluson

Last Modified on 10/07/2020 9:34 am EDT

GE Voluson Adaptive Reporting Configuration

The purpose of this user guide is to provide instruction to enable the setup of DICOM SR transfer from the GE Voluson ultrasound system into Tricefy Adaptive reporting. After reading these instructions, the user will be able to:

1. Set up Adaptive Reporting on the GE Voluson ultrasound system using Tricefy Inside or an external Tricefy uplink.

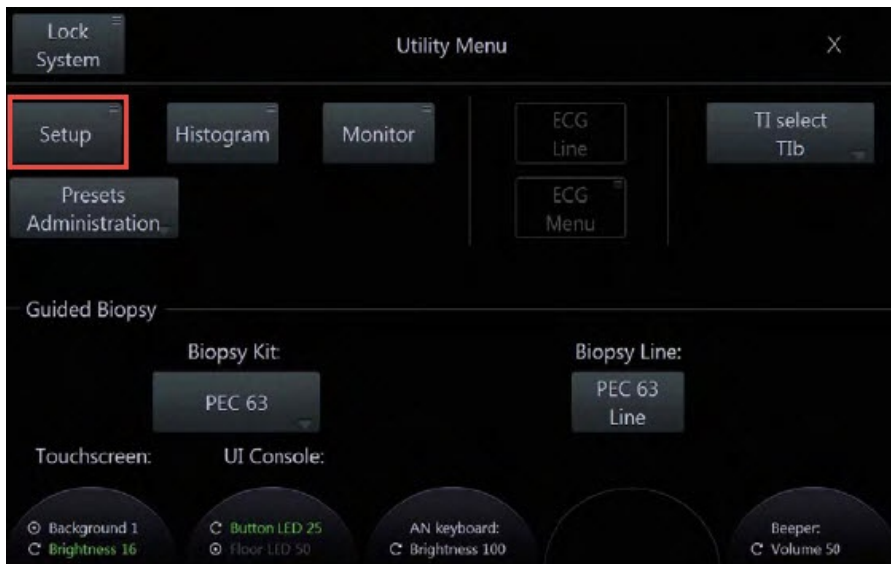
Section 1: Configure DICOM SR on the Voluson Ultrasound system to send to Tricefy adaptive reporting when using an external Tricefy uplink

Access to the GE Voluson DICOM setup is through the “Utilities” hard key located in the upper left side of the GE Voluson console. The DICOM information can be accessed through the following series of button pushes: **Utilities> Setup>Connectivity>Device Setup>DICOM configuration**.

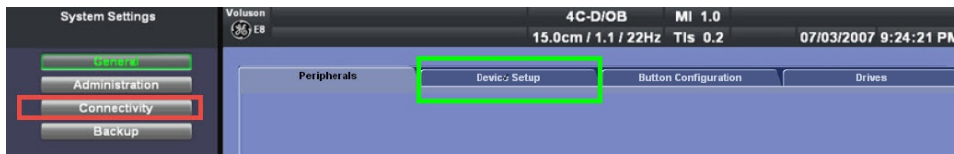
1. Press the **Utilities** hard key to bring up the menu on the touch panel.



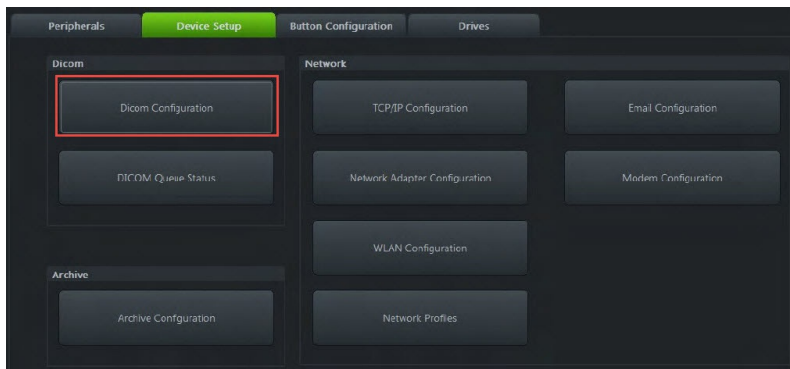
- 1.1 Once the Utilities menu is open on the touch panel, select **Setup** on the left hand side of the screen.



1.2 Use the cursor to select the **Connectivity** option on the left hand side of the screen.



1.3 Select the **Device Setup** tab. Once open, select the **DICOM Configuration** button. (top left option on the screen under the DICOM column.)



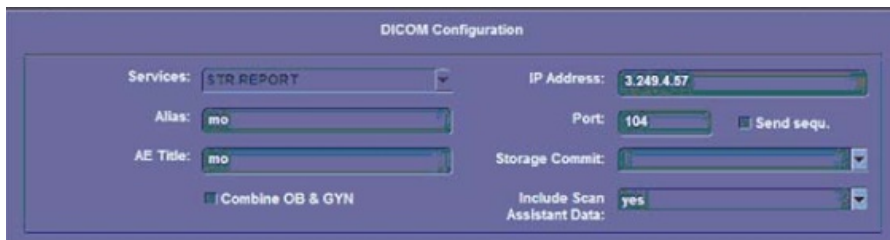
The DICOM information for the GE Voluson (AE title, Station name, retry count and retry interval) is located within the top portion of the DICOM Configuration page. **Do not** erase any previously entered DICOM data from the GE Voluson unless instructed to do so by the network administrator.



The DICOM Configuration screen allows you to add new services. In the case of adaptive reporting, the service to add is **STR.REPORT**

1.4 Click **Add** at the bottom of the page to set up a new DICOM service for structured reporting/adaptive reporting.

1.5 Under the **Services** field, use the drop down menu and select **STR.REPORT**



1.6 Enter the Alias, AE Title, IP address and port number. The remainder of the fields may be left blank.

The Adaptive Reporting connectivity information to be used with Tricefy Inside is:

- Alias: Trice SR
- AE Title: archive
- IP address: 127.0.0.1
- Port 8104

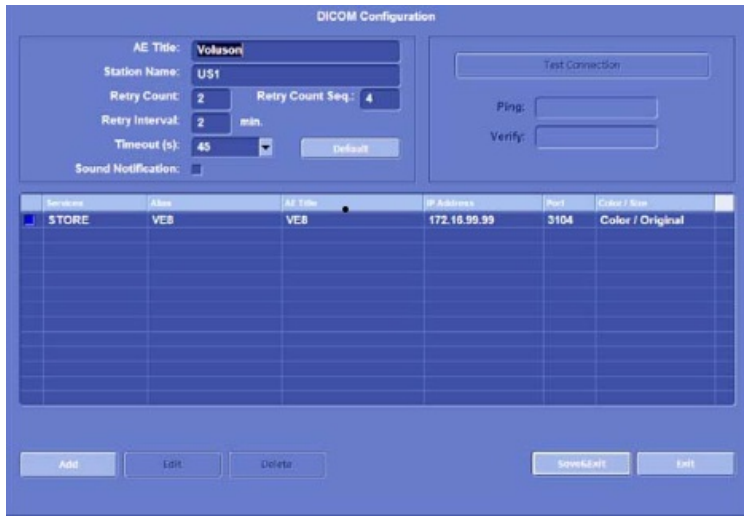
The Adaptive Reporting connectivity information to be used with an external Tricefy Uplink is:

- Alias: Trice SR
- AE Title: archive
- IP address: As obtained by the Tricefy Uplink host computer . This can be found under the Tricefy4.com account settings.
- Port: As obtained by the Tricefy Uplink host computer. The default is 104, but this should be verified in your Tricefy4.com account settings. The port can be set differently if already in use.

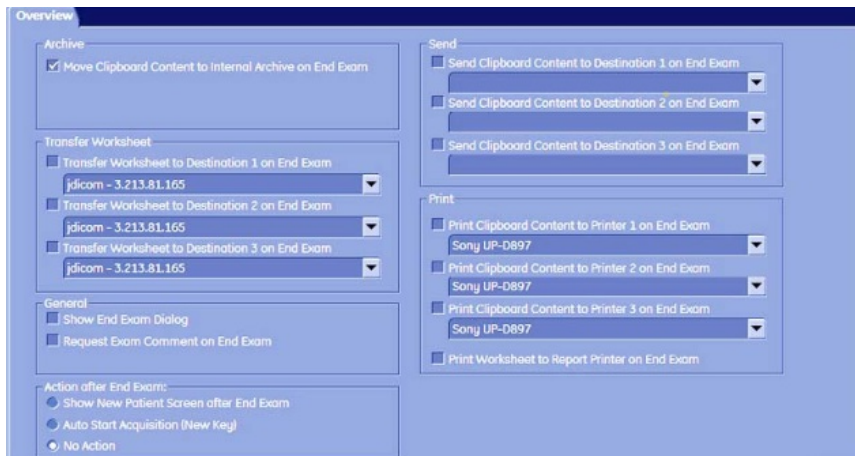
1.7 Select **Save & Exit** button on the bottom right of the screen to save the changes.

1.8 To confirm proper DICOM service configuration, click on the service added (STR. REPORT) under the services listed on the DICOM configuration page. Select **Test Connection** on the top right of the screen. If successful, a result of **OK** will appear in both

the Ping (outgoing) and Verify (receiving) fields. This may take up to 30 seconds.



1.9 To configure the GE Voluson to automatically send the report to Tricefy upon end of exam, follow these steps: **Utilities>Setup>Connectivity>Button configuration> end exam**. Under the **Transfer Worksheet** section, use the drop-down menu to select Tricefy Archive and check the box. The report will now automatically be sent to Tricefy when the user ends the ultrasound examination.



Alternatively, you can use the Transfer Data button on the Report menu touch panel. To send SR data using the Transfer Data button, select the report hard key from the console, then select **Transfer Data** from the report menu touch panel. Measurements will automatically be sent to Tricefy.



Troubleshooting:

Step 1: Make sure the ultrasound system is connected to the network.

Step 2: Make sure the IP address, AE title and port number match those of the Tricefy uplink.

Step 3: If issues persists, please contact Trice support.

Congratulations! DICOM SR has now been successfully configured to send measurements from the ultrasound system directly to your Tricefy account.
